

# **BEMIDJI CITY COUNCIL**

## **Work Session Agenda**

**Monday, November 14 2016**

**City Hall  
Conference Room  
5:30 P.M. (or soon thereafter)**



1. CALL TO ORDER / ROLL CALL

2. CLOSE THE MEETING

*For the purpose of discussing with the City's Attorney threatened or pending litigation with regards to issues at the Birchmont Drive Assessments.*

3. REOPEN THE MEETING

4. 2017 STREET RENEWAL PROJECT

5. ADJOURNMENT

***Please Note: All cellular telephones, pagers and BlackBerry devices to be switched to a non-audible function during Council and Committee meetings.***

# COUNCIL AGENDA ITEM



**Meeting Date:** November 14, 2016 Work Session

**Action Requested:** 2017 Reconstruction of Delton Avenue – 15<sup>th</sup> Street to Trunk Highway 197 (Paul Bunyan Drive) – Discuss Design Widths/Sidewalk

**Prepared By:** Craig Gray, City Engineer 

---

## Background:

I just wanted to take a few minutes to discuss with Council the design that we are proposing for the Delton Avenue reconstruction project. The design is a little unique and we have a neighborhood meeting scheduled for December 8.

Our main goal is to get either a sidewalk or a trail included as part of the road reconstruction. Delton Avenue is a state aid road so that limits us a little bit on what we can do with the road width. Unfortunately I don't see a feasible way to get a separated 10-foot bituminous trail built but I think we can add a 5-foot sidewalk with a 5-foot boulevard.

The current road is 40 feet wide from back of curb to back of curb. Due to the presence of large electric poles on the east side and large trees on the west side we really cannot expand our construction beyond the 40-foot wide existing corridor. The poles and the line are too large to move and there is not enough right-of-way. The challenge is that we also have to keep the existing 40-foot road width between 22<sup>nd</sup> Street and TH 197 for business parking.

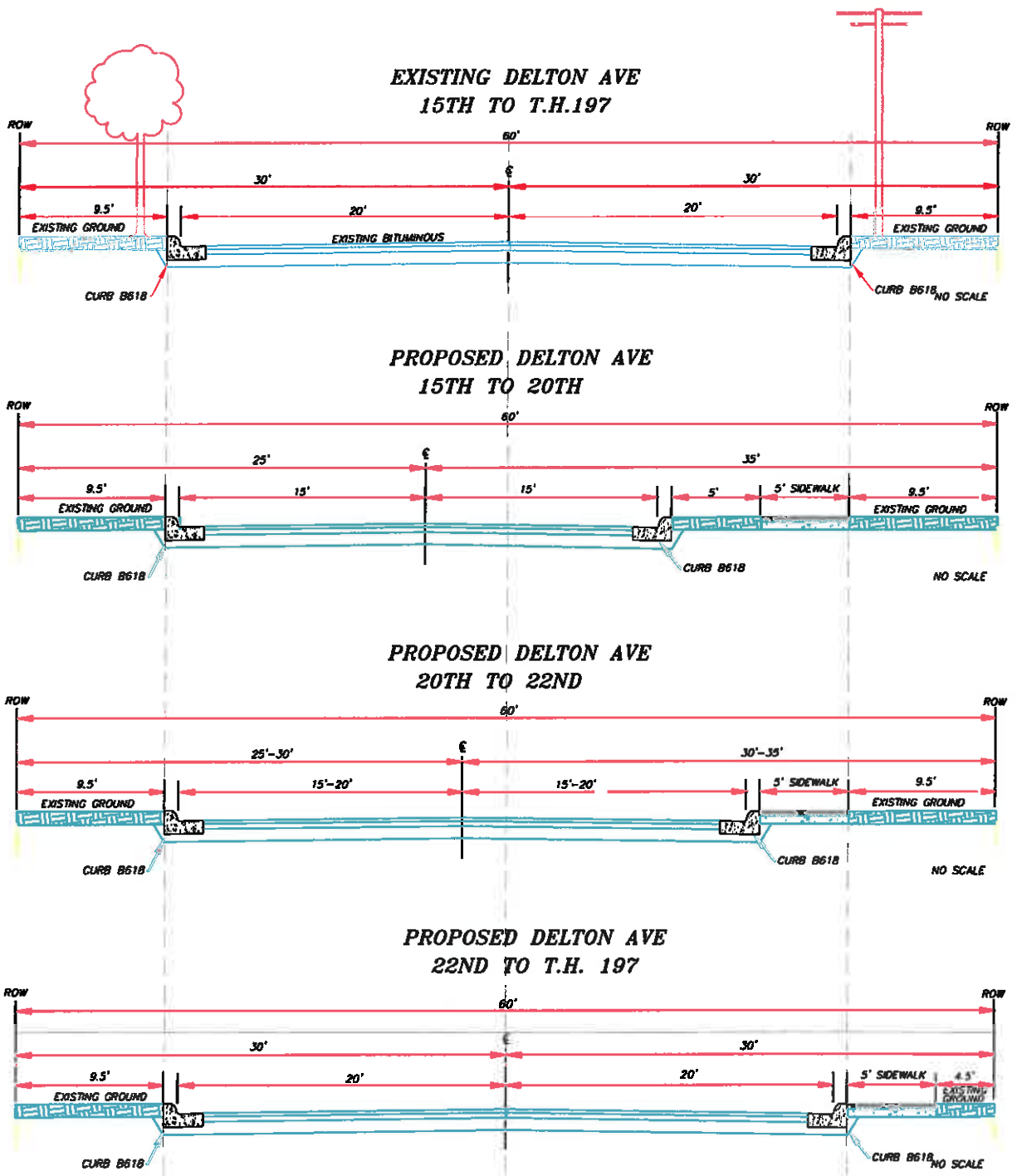
In bullet point form, here is what we are proposing and that I will discuss:

- Because of the trees and the poles we will need to hold one curb line in its existing spot and do all the narrowing for a sidewalk on one side (the east).
- Narrow the road to 30 feet and add a 5-foot boulevard and a 5-foot sidewalk on the east side. This will require posting for No Parking.
- Because we have to have a 40 foot wide road back by 22<sup>nd</sup> Street we will need to "gradually" taper the east curb line of the road out from 20<sup>th</sup> Street to 22<sup>nd</sup> Street.
- At 20<sup>th</sup> Street the sidewalk will need to be moved behind the curb and the east curb line will be tapered from 30 feet to 35 feet.
- Between 21<sup>st</sup> and 22<sup>nd</sup> Street the east curb line and sidewalk will be tapered from 35 feet to 40 feet wide.

This is shown on the cross sections and layout. The taper is little different, but a 5-foot taper over a length of 300 feet is fairly gradual and should not be very noticeable to the driver.

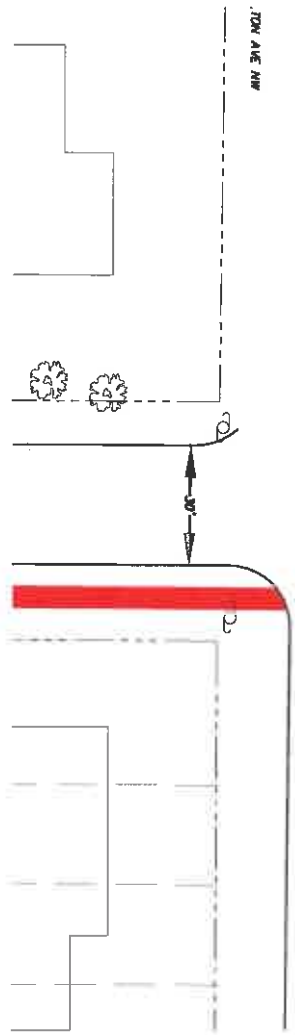
# EXHIBIT B

## TYPICAL SECTIONS

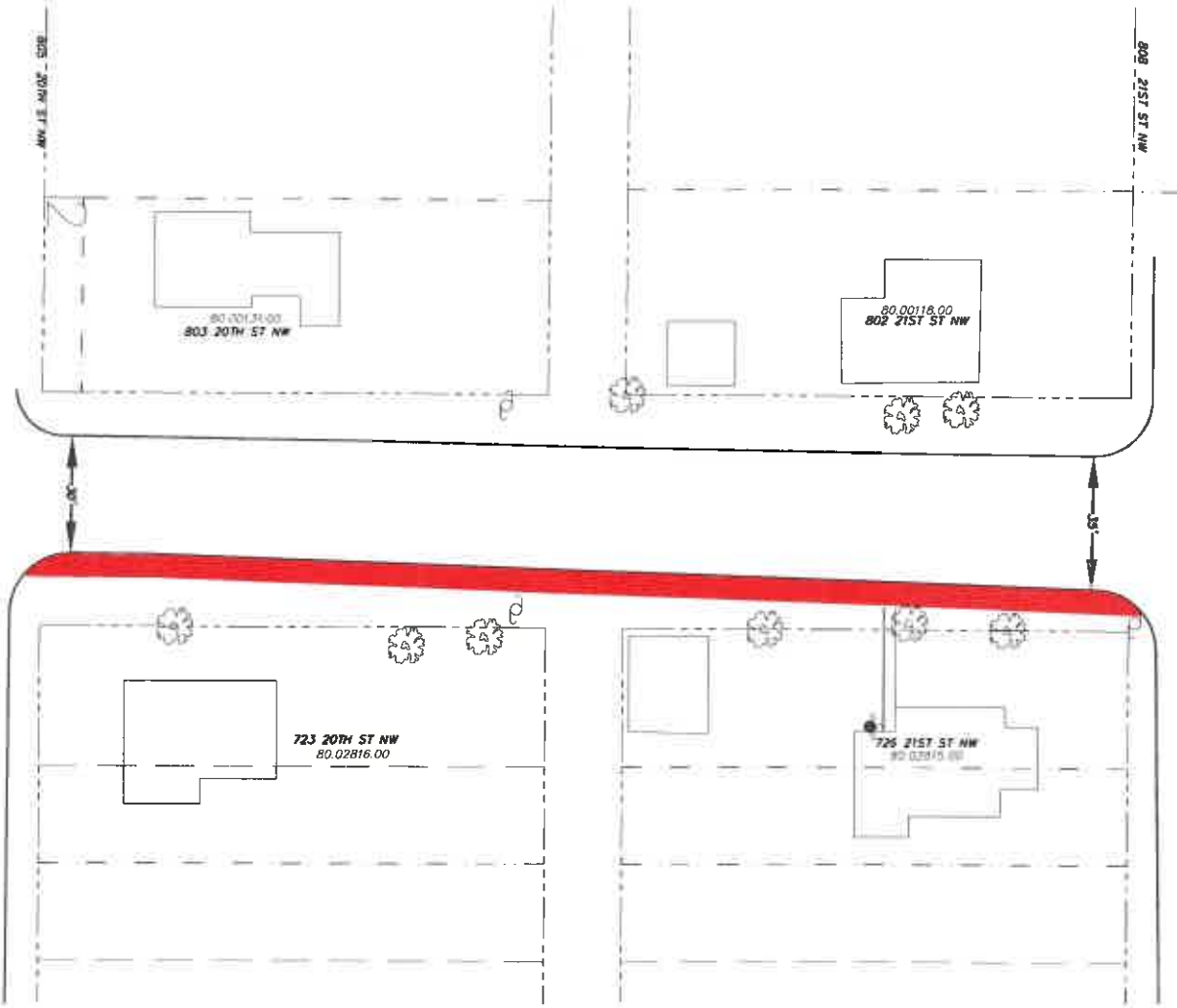


### 2017 STREET RENEWAL PROJECT

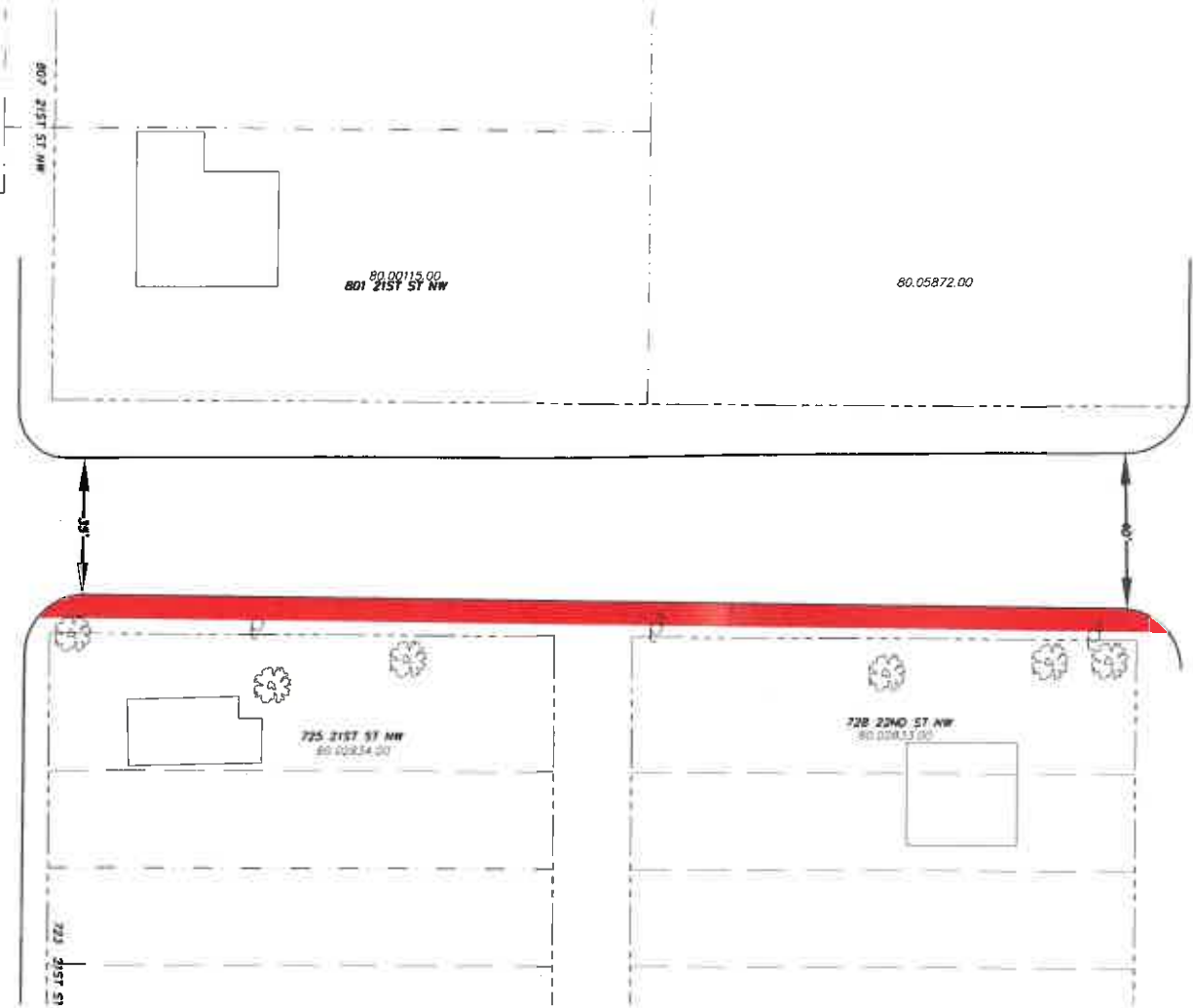




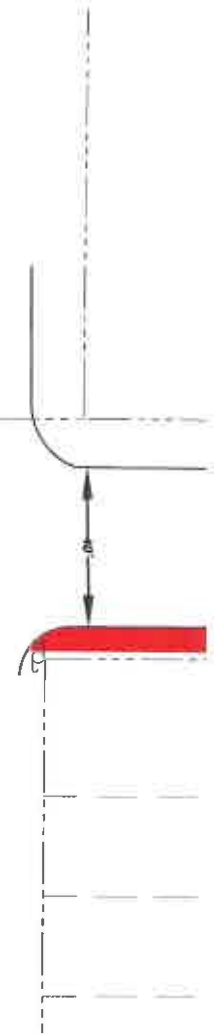
20th ST NW

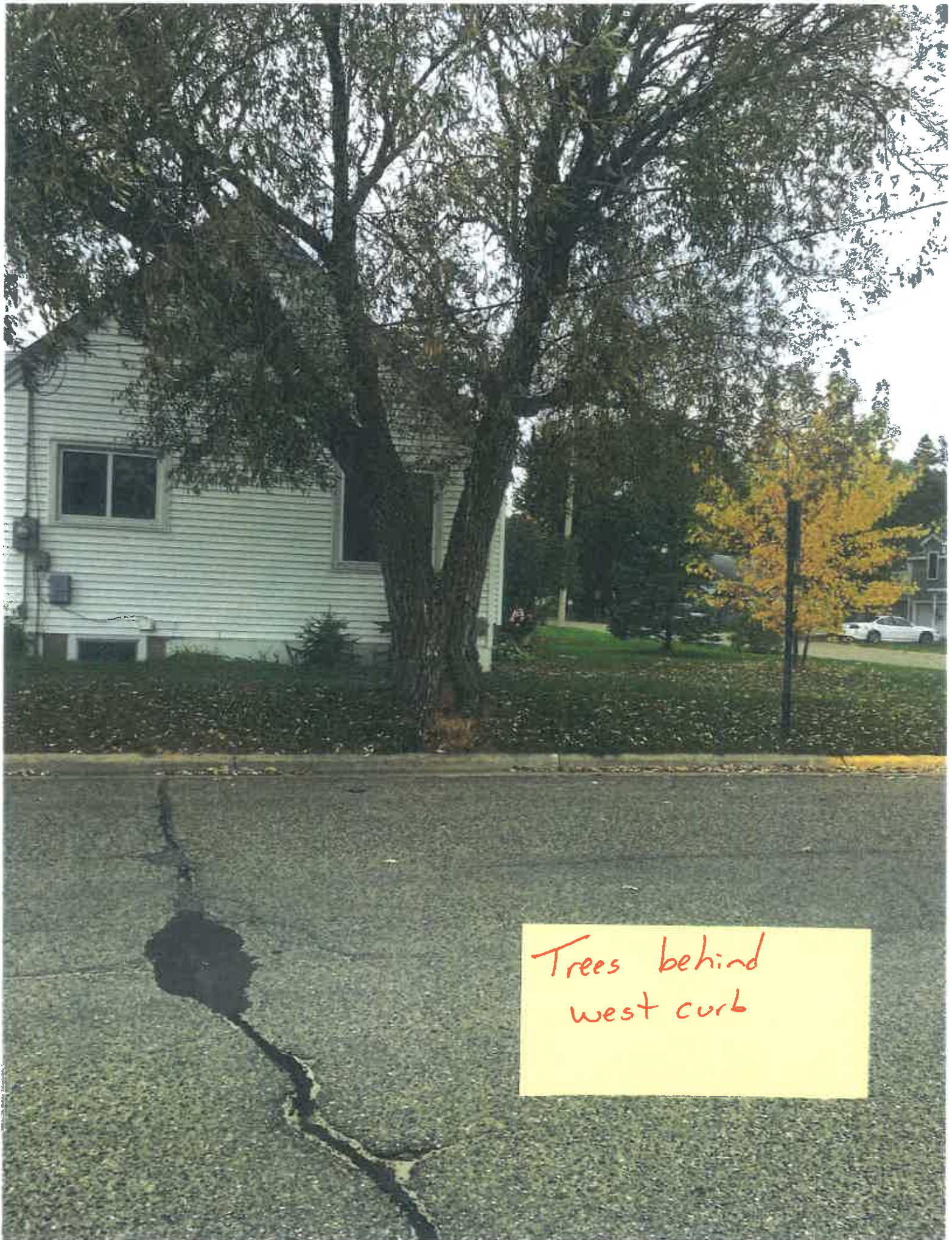


21st ST NW




22nd ST NW





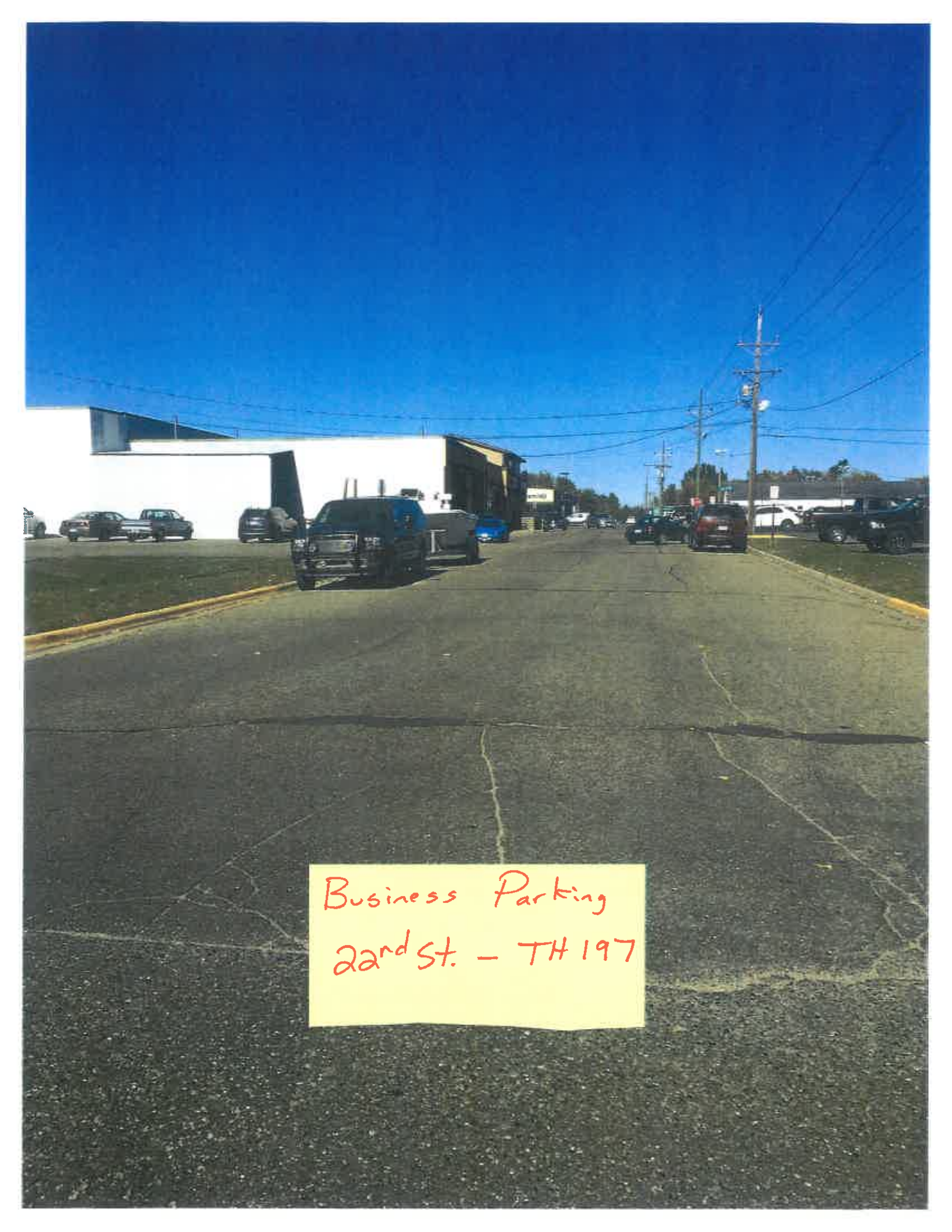
Trees behind  
west curb



Trees behind  
west curb



Poles behind  
east curb

A photograph of a parking lot under a clear blue sky. In the foreground, a yellow sticky note is placed on the asphalt. The note contains the text "Business Parking" and "22nd St. - TH 197". The background shows a paved parking area with several cars parked, including a dark SUV in the center. To the left, there is a white building with a dark roof. Power lines and poles are visible on the right side of the image.

Business Parking  
22nd St. - TH 197





Country Kitchen  
Lot